

York Hills Master Plan

Leah Kauffman

Design Concept:

Designed with the concept of “Green Equity” in mind. I wanted every one interacting with the site to have some kind of unobstructed view or access to a quick walk to/of green or natural space.

solar panels on the roofs of office buildings

“Noise Mural” noise barrier that doubles as a mural space on the side that faces the park

While I would like to keep the planting fairly consistant with the current growth, orange planting denotates areas where other plants may be introduced.

Key

- planting
- trees
- shrubs
- community garden space
- high slope areas
- roadways/parking
- sidewalks
- grass
- tiny homes
- 4-plex
- townhomes
- office
- commercial
- parking garages
- bike lane
- protected wetlands

note:
Sidewalks, bike lanes, and planting strips are visualized by a single line.
See “Enlargement” for further detail.

Tabulations

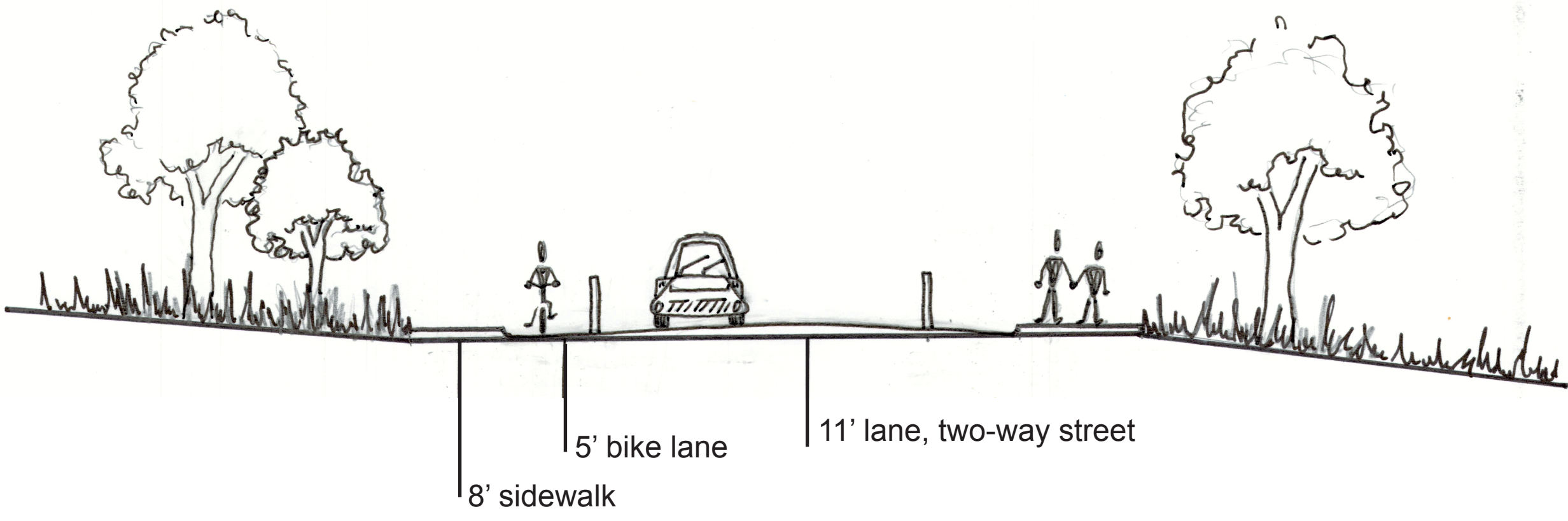
Land Use	Acres	Percentage
Tiny Home Lots	11.26	10%
4-Plex Lots	1.4	1%
Townhomes	0.69	0.50%
Commercial	0.83	0.70%
Office	2.25	2%
Parking	3.71	3%
Road Rights-of-way (ROW)	5.17	4%
Parks	4.12	3%
Open Space	88.96	76%
Total	118.39	

Scale: 1" = 100'
0' 20' 50' 100'



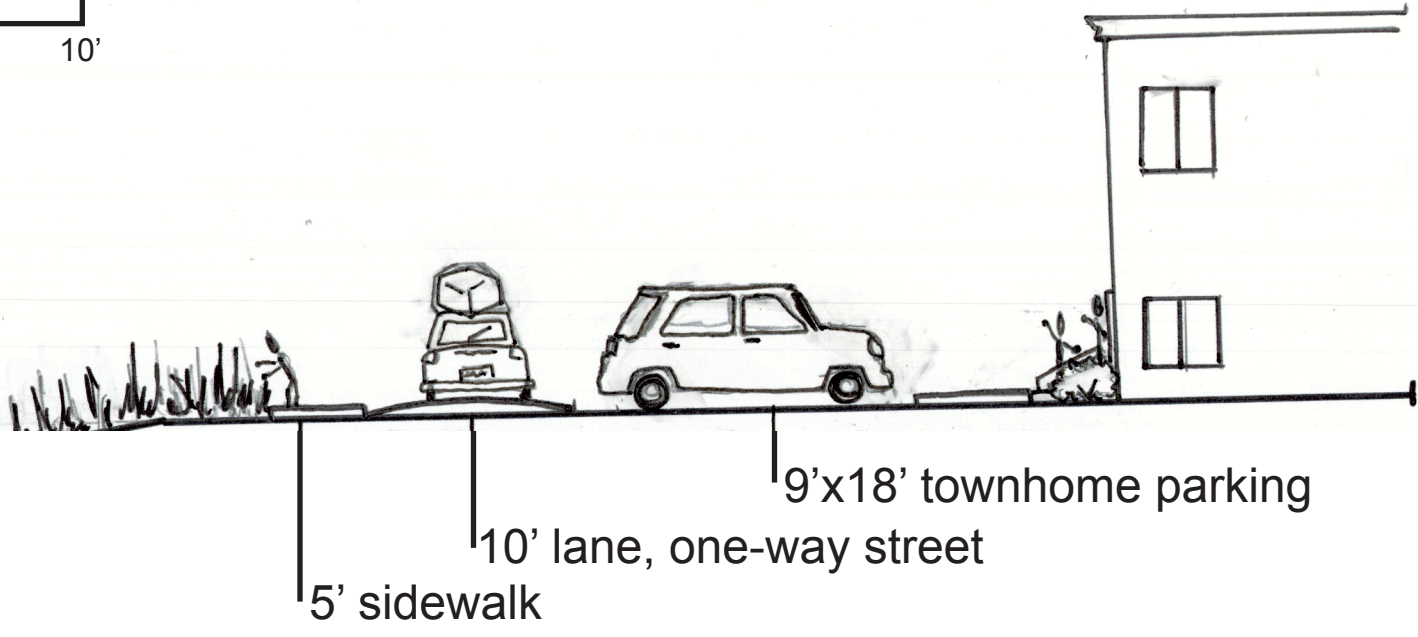
Section Drawings

Parking - 889 total spaces



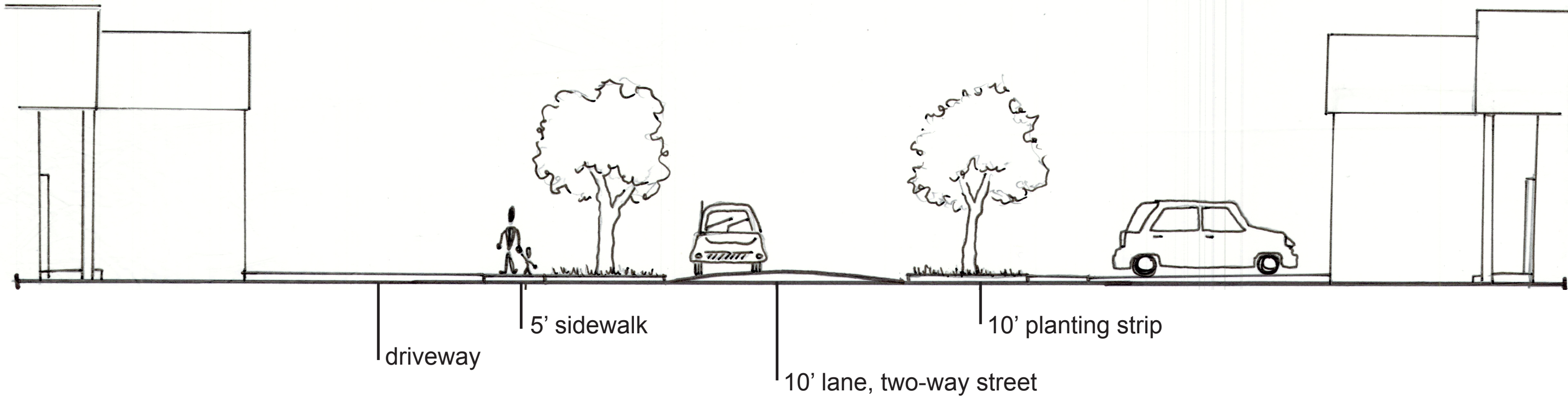
Section 1: Main Roadway Conditions

Scale: 1/8" = 1'
0' 2' 5' 10'



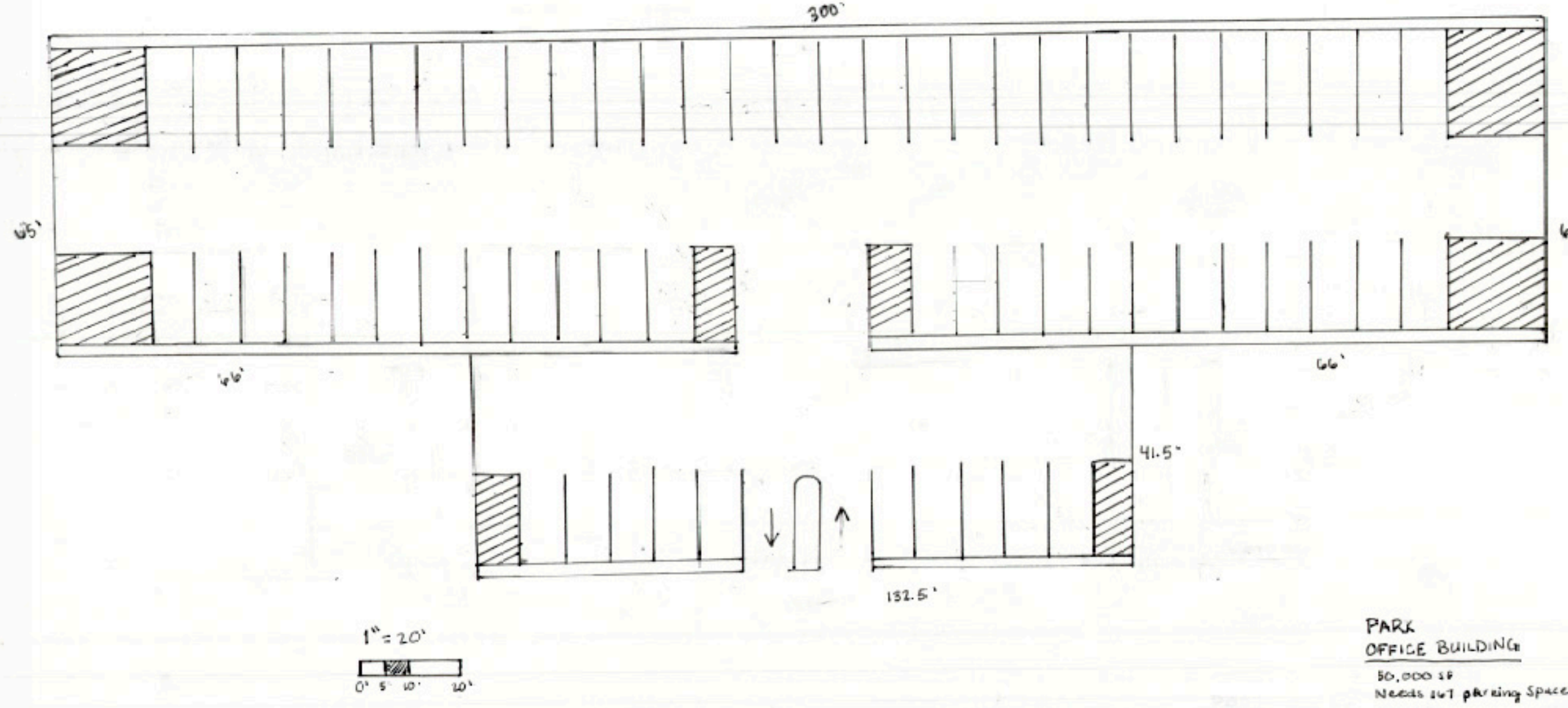
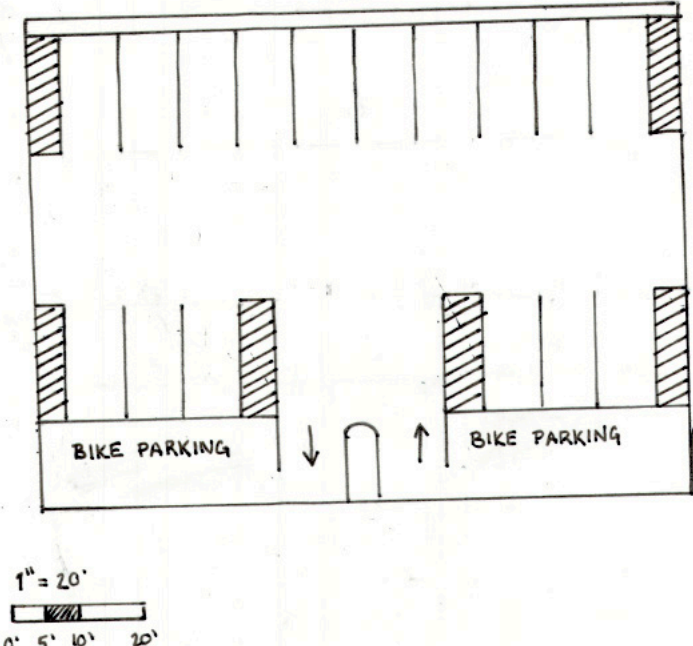
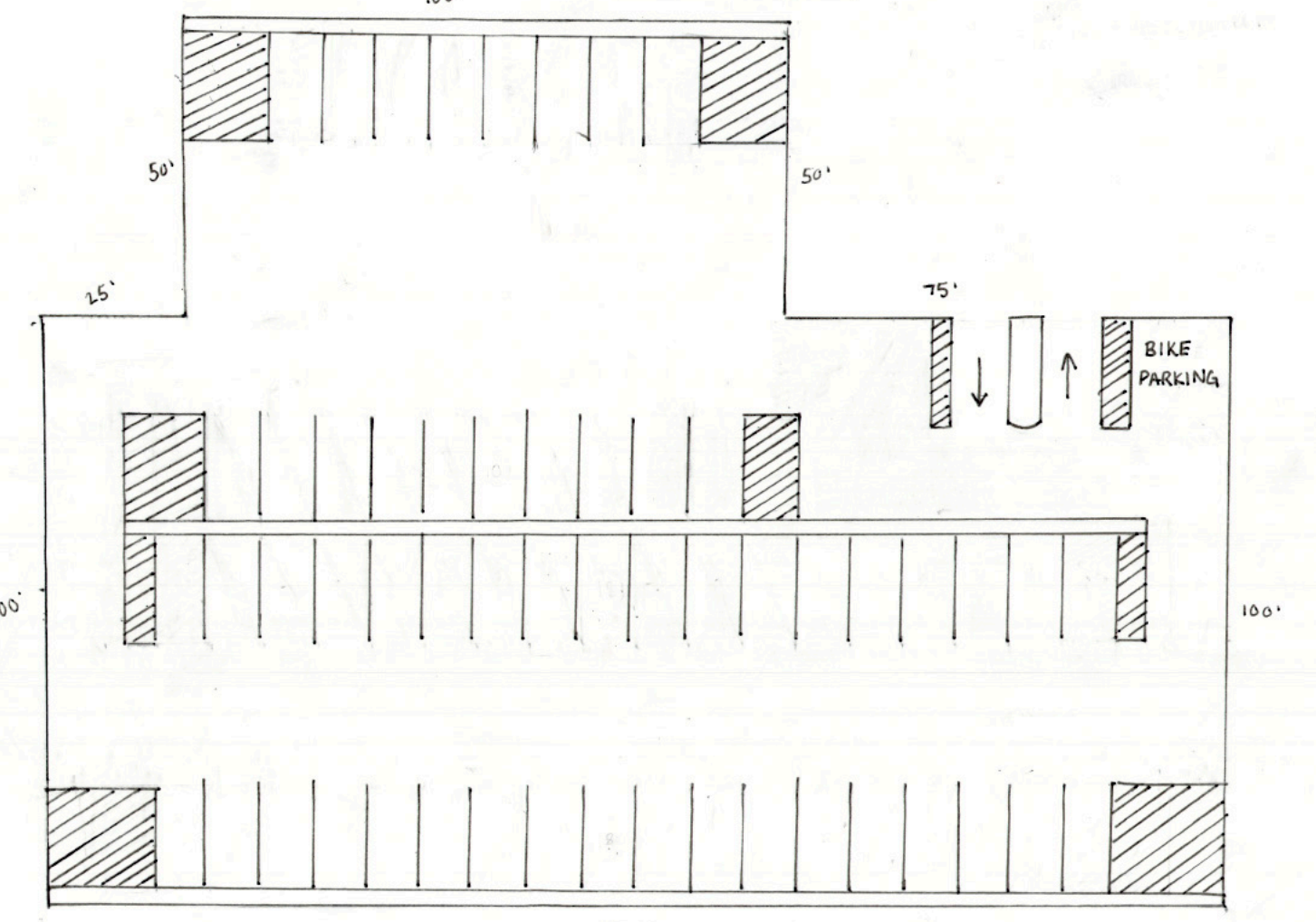
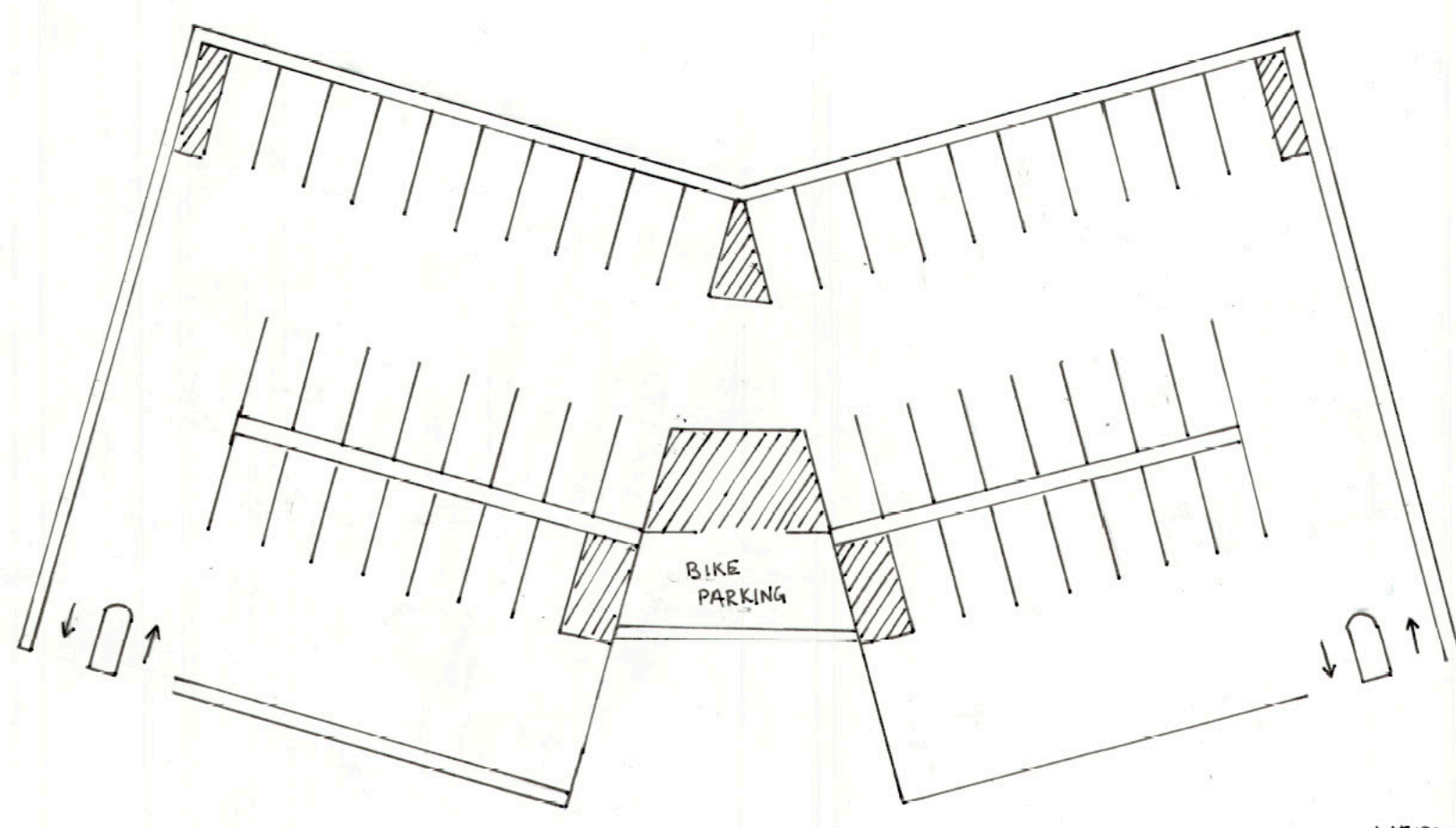
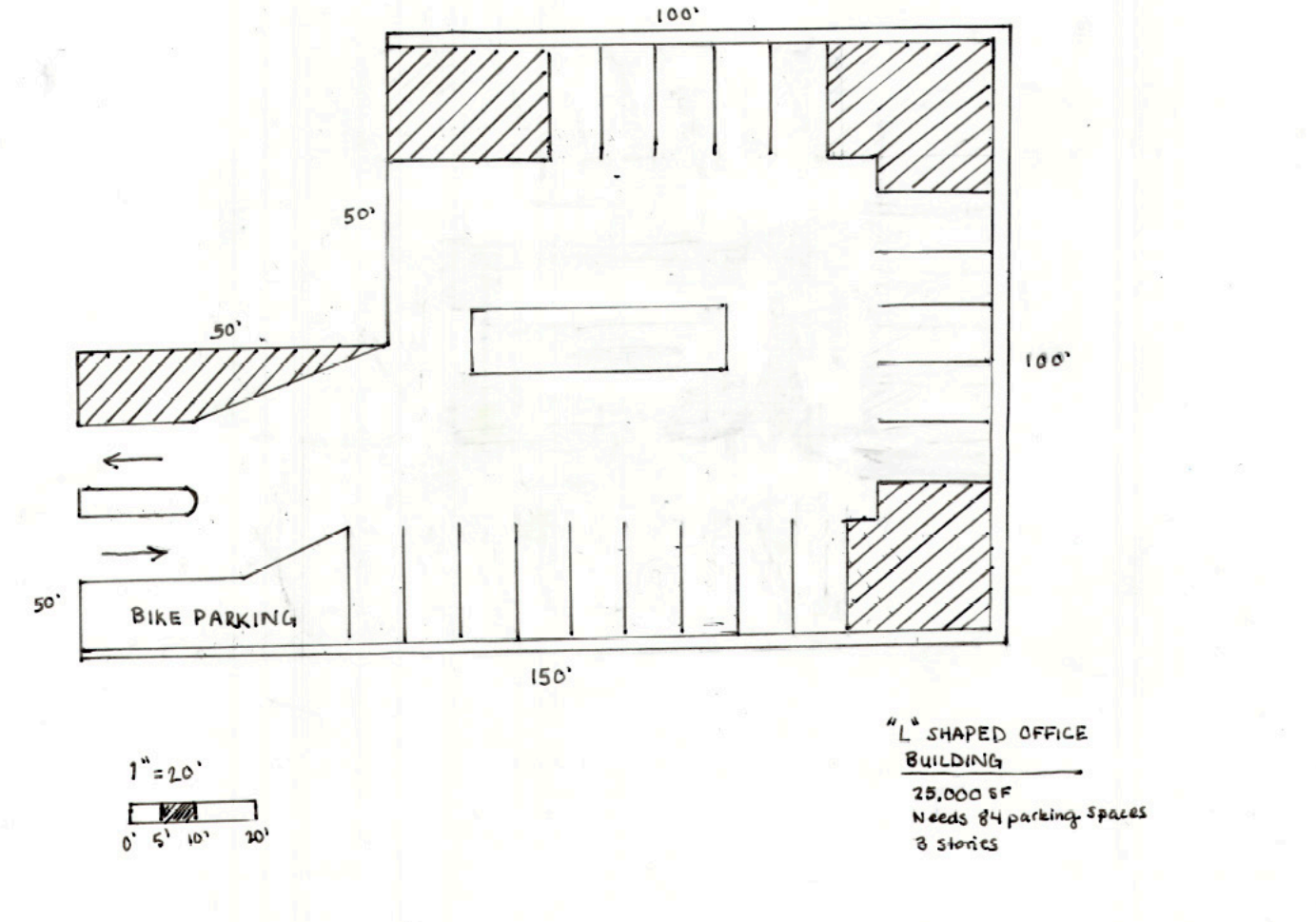
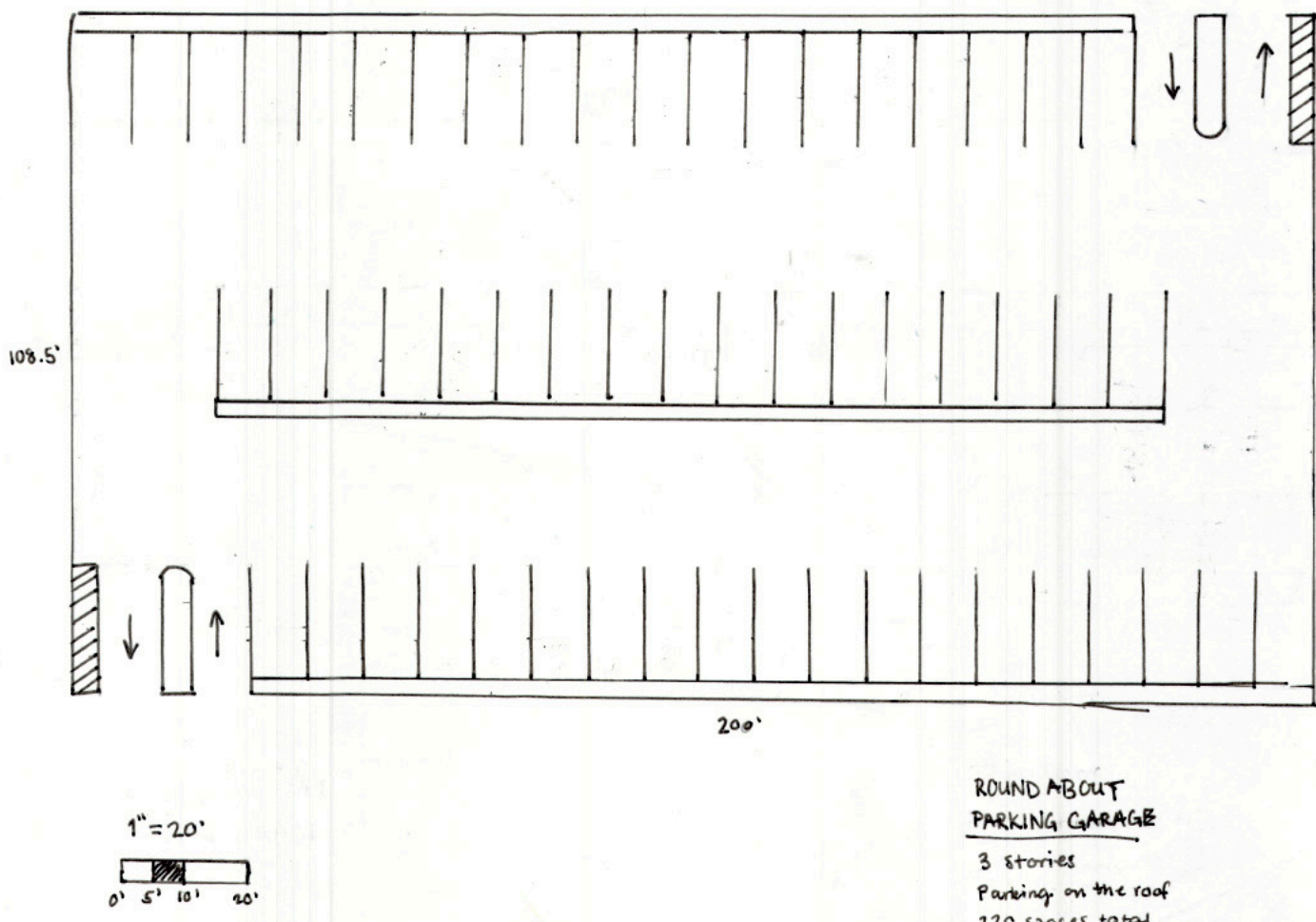
Section 2: One-Way Roadway Conditions

Scale: 1/8" = 1'
0' 2' 5' 10'

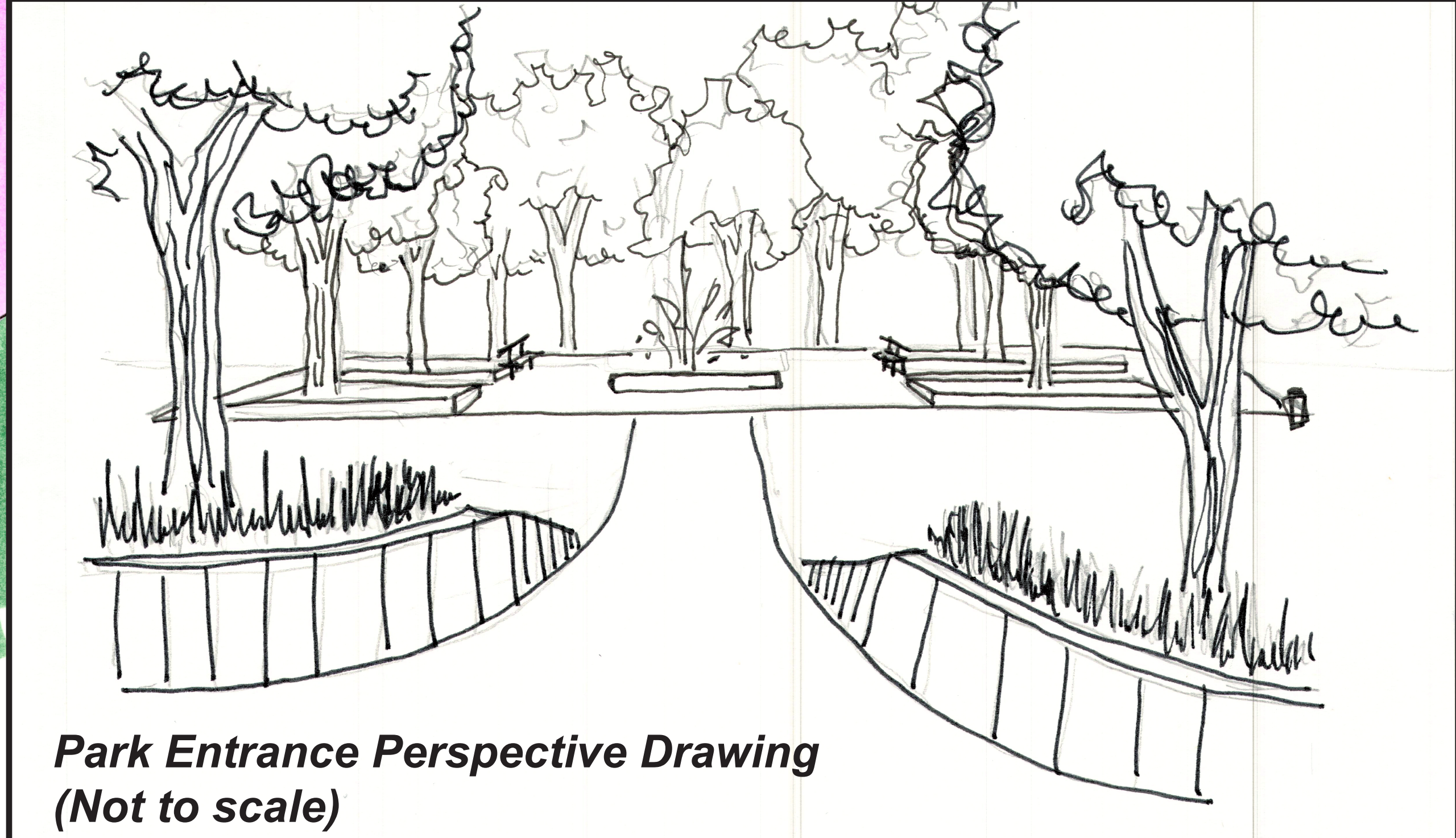


Section 3: Residential Roadways

Scale: 1/8" = 1'
0' 2' 5' 10'



Enlargement



Scale: 1" = 20'
0' 5' 10' 20'